



LG E&C

Construction and Engineer

LG E&C is the DBA of LOENGREEN INC and LOENGREEN NV LLC, providing construction and engineering services in California and Nevada.





ABOUT OUR COMPANY

LG E&C is the DBA of LOENGREEN INC and LOENGREEN NV LLC, providing construction and engineering services in California and Nevada. LOENGREEN's predecessor was Daewon Co., which started as a building material supplier in Incheon, South Korea 1981.

In 2008, LOENGREEN was established as a Corporation in California, USA, and acquired the General Building B License from California State in 2018, the General Building B License from Nevada State in 2019, and the California General Engineering A License in 2024 to provide commercial, institutional, and residential construction services.

We provide building construction and civil engineering construction services. LG of LG E&C is an abbreviation of LOENGREEN, Initial, and LOENGREEN, a word invented from LOVE and GREEN, meaning it aims to build spaces where humans and nature live in harmony. LG E&C provides construction services with the overriding goal of increasing the value of customers' property.

1981 DAEWON INDUSTRIES

Concrete block supplier in South Korea

1986 DAEWON CONSTRUCTION

Residential Building Construction and Development in South Korea

2005 TORAM CO., LTD

General Building Construction and Development in South Korea

2008 TORAM USA, Inc

General Building Construction and Development in California

2013 LOENGREEN INC

General Building Construction in California

2018 LOENGREEN NV LLC

General Building Construction in Nevada

2024 LG E&C

General Engineering and Building Construction in California



OUR SERVICE



+ General Contractor

Institutional and Commercial Building Construction
Custom Residential Construction
General Engineering Construction
Government Building Construction

Design Build +

Planning, Conceptual design,
Architecture design, Permitting, and Construction.

Value Engineering / Budget Control / Turn Key



+ Feasibility and Construction Management

Planning and Financial Analysis
Value Engineering
Construction Management

We Build
Your **DREAM** and **VALUE.**



PROJECT PORTFOLIO



Commercial

Project Name: Lee's Discount Liquor at Mesquite in Nevada

Project Summary: 2019 project. This is a 15,000 sq ft expansion project to a 36,000 sq ft commercial retail building in Mesquite, Nevada: 32 feet Concrete Masonry Block wall system and truss steel web roof structure.

\$2,158,000

Project Value

8 Month

Project Period



PROJECT PORTFOLIO



Commercial

Project Name: Lee's Discount Liquor at Tenaya in Las Vegas, NV

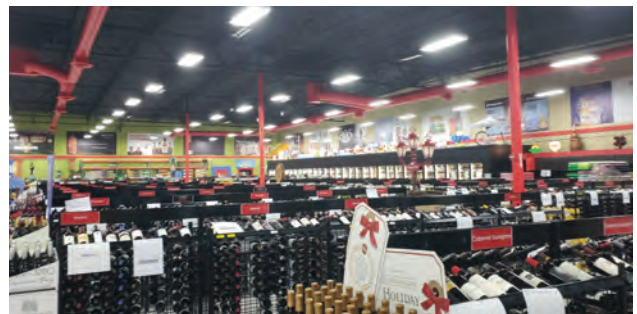
Project Summary: 2020 project. A project to ground up a 38,000 sq ft commercial retail building on a 2.6 arc vacant lot in Tenaya, Las Vegas, Nevada. It is a 32-foot Concrete Masonry Block wall system, truss steel web roof structure, and post tension concrete structure. The total construction period takes 11 months.

\$4,200,000

Project Value

11 Month

Project Period



PROJECT PORTFOLIO



Government Building

Project Name: Cesar Chavez and Whitney Park in Las Vegas, NV

Project Summary: 2022 project. Public Park construction located in Las Vegas, Nevada.

\$850,000

Project Value

4 Month

Project Period



PROJECT PORTFOLIO



Government Building

Project Name: Placentia Public Safety Center in Placentia, CA

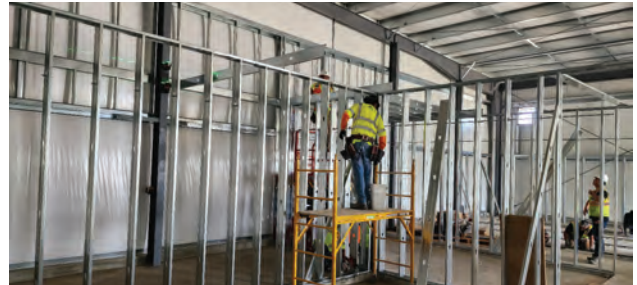
Project Summary: 2023 project. The Public Safety Center project is to be built in Placentia, California. The project period is 10 months.

\$1,850,000

Project Value

10 Month

Project Period

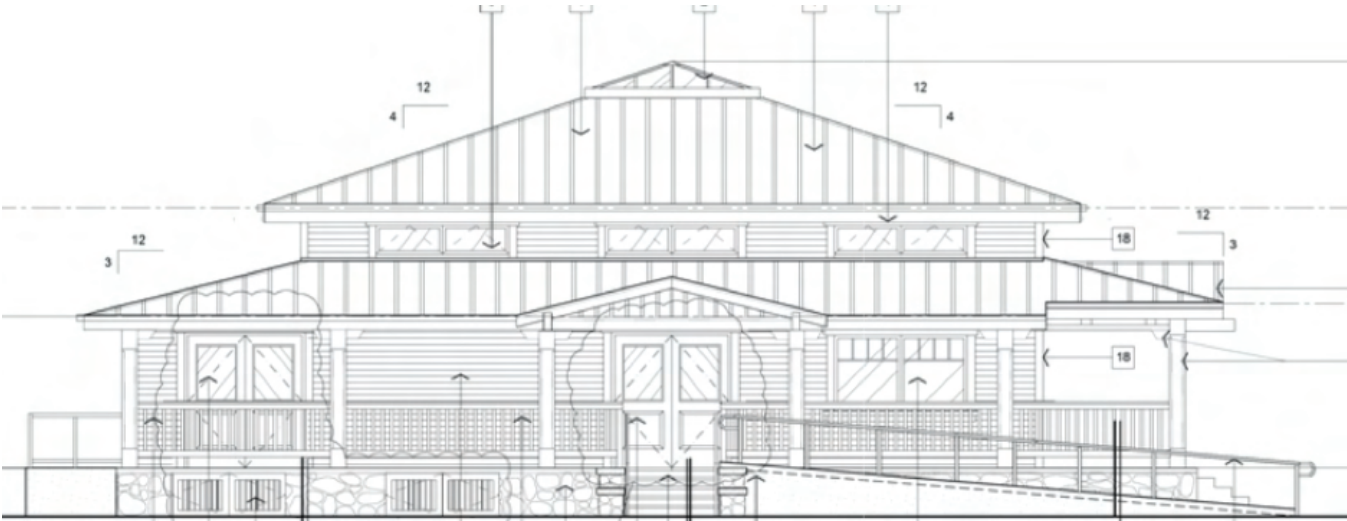


OUR COMING PROJECT

Project Name: Ontario Downtown Mobility Hub

Project Summary: 2024 project. Mobility Hub is a new construction in downtown Ontario, California. Estimated construction period: 8 months

<h2>\$4,040,000</h2> <p>Project Value</p>	<h2>8 Month</h2> <p>Project Period</p>
-------------------------------------------	----------------------------------------





WE BUILD YOUR DREAM AND VALUE

info@lg-enc.com

833-655-2278 (Office)
833-332-3121 (Fax)

www.lg-enc.com